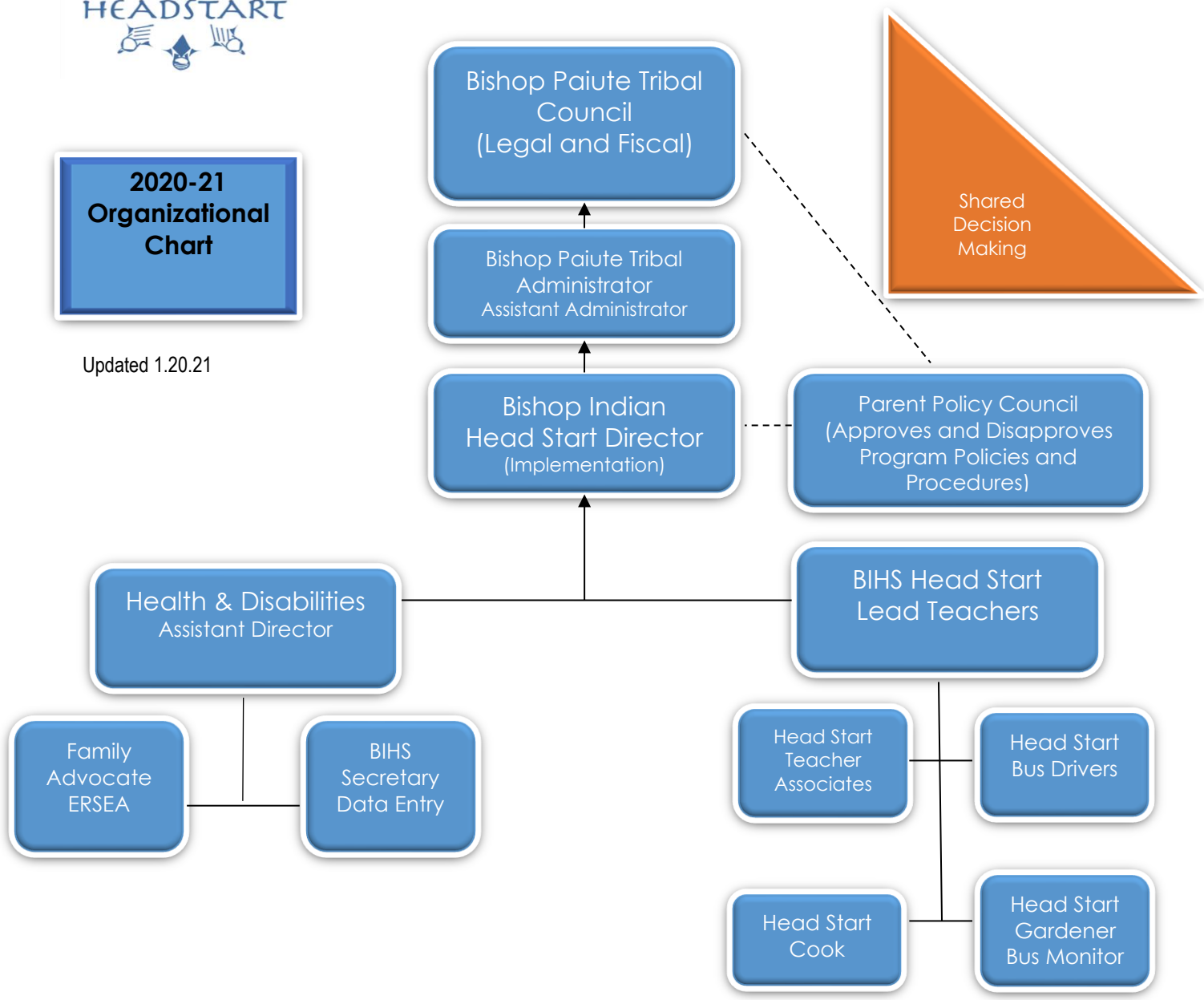




**2020-21
Organizational
Chart**

Updated 1.20.21



Bishop Paiute Tribal Council: Tilford Denver-Chair, Jeff Romero-Vice Chair, Steven Orihuela-Secretary/ Treasurer, Joyce White-Council Member and Allen Summers-Council Member
Parent Policy Council: Raymond Paul Stone-Chair, Kathleen Stout-Vice Chair; Ana Andreas-Secretary/ Treasurer/community rep; Marcella Frankson-Events Coordinator; Bonnie Amisone, Policy Council Member
Bishop Paiute Tribal Administrator: Gloriana Bailey
Bishop Paiute Chief Operations Officer I: Sabrina Renteria
BIHS Director/Sub Driver/Sub Cook/Sub Teacher/Civil Rights Coordinator: Susie Cisneros
Health & Disabilities Assistant Director: Amanda Miloradich (Assist in Nutrition and Safety and program operations)
Family Advocate/ERSEA: Paige Sills
BIHS Assistant Cook/Admin Assistant/ Lead Bus Driver: Gwen Turner
Teachers: Tanya Spoonhunter, Trisha Salazar, Lena Dondero, Annette Dondero, and Dayle Dondero (Available sub teachers: Virginia Figueroa and Karen Howard)
Associate Teachers: Tashina Brown, Eileen Jackson and Paula Manriquez
BIHS Secretary and Data Entry: TBA
Head Start Cooks (CACFP): TBA and Gwen Turner (as needed)
Head Start Bus Drivers: Gwen Turner and Darrin Bernard Sub Drivers (Phillip Kane and Lena Dondero)
Big Pine Bus Monitor/Gardener/Landscaper: Max Ortiz
Bishop Tribal Maintenance: Cynnara Shay